


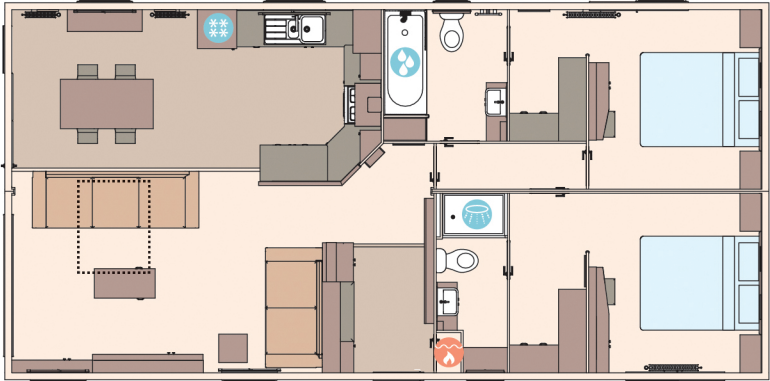
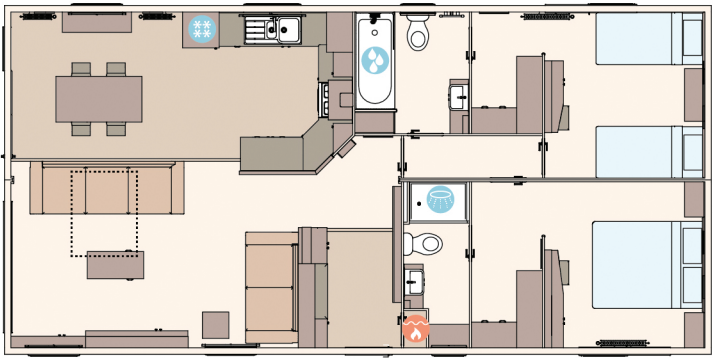


The Kielder
Floorplans

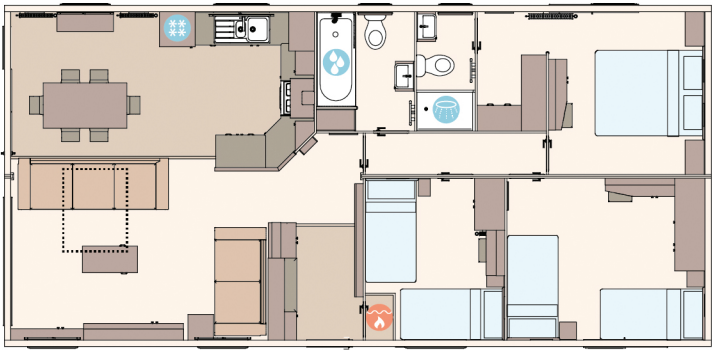
 FIRE  WATER HEATER  SHOWER  FRIDGE/FREEZER  FRONT PULL OUT BED



40FT X 20FT X 2 BEDROOM (DOUBLE BED OPTION)



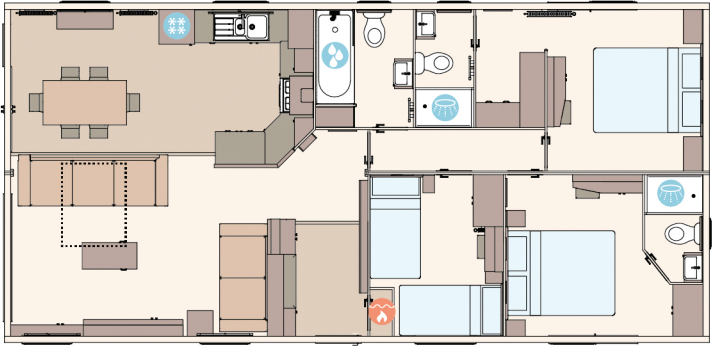
40FT X 20FT X 2 BEDROOM



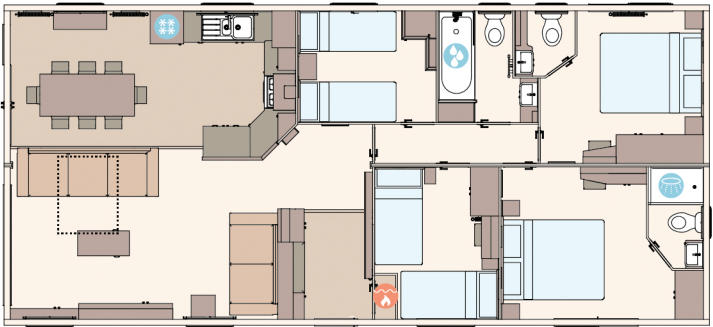
41FT X 20FT X 3 BEDROOM



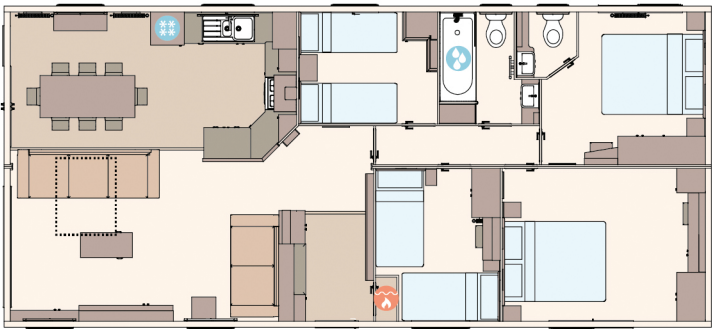
41 X 20 X 3 BEDROOM (DOUBLE BED OPTION)



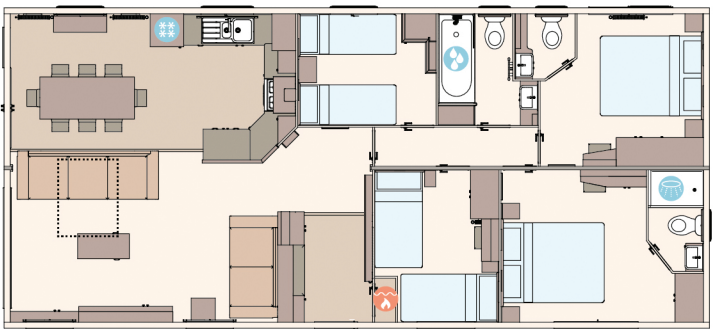
41 X 20 X 3 BEDROOM (DOUBLE BED WITH EN SUITE OPTION)



44FT X 20FT X 4 BEDROOM



44 X 20 X 4 BEDROOM (DOUBLE BED OPTION)



44 X 20 X 4 BEDROOM (DOUBLE BED WITH ENSUITE OPTION)

* There are a number of factors which will determine the overall cost of your holiday home, including the location of the park, the type of plot and any optional extras. The basic price of each model without any optional extras and plot fees is shown above, but final prices will vary depending on the park and location. The above prices are inclusive of VAT. Please speak to your chosen park or dealership for further information.